



## **Stellar Phoenix Mailbox Exchange Desktop**

Version 4.0

User Guide



## Overview

Stellar Phoenix Mailbox Exchange Desktop is a complete solution to convert Microsoft Outlook Offline Storage (OST) files to Microsoft Outlook Personal Storage (PST) files.

### What is OST File?

If you use Outlook as an Exchange Server client and do not use PST file to store your data (instead store your data on the Exchange Server), OST file allows you to work offline. OST file acts essentially as an offline copy of your data store on the Exchange Server. When you're working offline, all changes that you make to contacts, messages, and other Outlook items and folders occur in the offline store. When you go online again, Outlook synchronizes the changes between offline store and your Exchange Server store. For example, if you've deleted messages from your offline store, Outlook deletes those same messages from your online store when you synchronize the folders. Any new messages in your Inbox on the server are added to your offline store. Synchronization is a two-way process, providing the most up-to-date copy of your data in both locations, ensuring that changes made in each are reflected in the other.

An OST file is similar to a PST. The difference is that an OST file is RTF-aware, while a PST is not. The contents of any folder designated as an offline folder are included in the OST file, but the contents of the mailbox and other folders are not.

### Key features:


- Enables user to view messages in 3-view format
- Recovers e-mails, calendar entries, contacts, notes and journals
- Restores formatting from RTF and HTML messages
- Converted file is saved as new PST file on any (including network) disk visible by the host operating system
- Creates unique profile for PST file
- Supports MS Outlook 2000, 2002 (XP), 2003, 2007



## Stellar Phoenix Update Wizard

The Stellar Phoenix Update Wizard keeps your Stellar Phoenix Mailbox Exchange Desktop application updated. Update option in the application checks for the latest updates available online. Stellar Phoenix Update Wizard checks for latest minor and major version available online. Stellar Phoenix Update Wizard automatically installs the minor version, if available. However, if major version available then you need to purchase it. While updating the software, it's recommended to close all the running programs.

### To start Stellar Phoenix Update Wizard:

1. In the Stellar Phoenix Mailbox Exchange Desktop screen, Click **Update Wizard**  icon. the Stellar Phoenix Update Wizard window opens, click **Next**. The wizard will start searching for the latest updates and if it finds any new version, a window pops up indicating the availability.
2. Click **Next**, the software will start downloading files from the server. When the process is complete, the software will upgrade to the latest version.

### Live Update may not happen due to following reasons:

- Internet connection failure
- Updates are not available



If major version is available, to upgrade the software you have to purchase it.



Stellar Phoenix Mailbox Exchange Desktop

---

## Getting Started

Stellar Phoenix Mailbox Exchange Desktop software converts OST files to PST files and saves them to your preferred location. It also shows content of converted OST file in a three-pane structure. When the scanning process is completed, all the recovered emails, notes, journals, tasks, calendar entries and contacts can be viewed in Stellar Phoenix Mailbox Exchange Desktop window. You can save the recovered PST file to your location.



## Installation Procedure

Before installing the software, ensure that your system meets the minimum system requirements:

### Minimum System Requirements

- Processor: Pentium Class
- Operating System: Windows NT4(SP6)/2000/XP/2003/Vista/Windows7
- Memory: Minimum 256 MB (512 MB recommended)
- Hard Disk: 50 MB of free space
- MS Outlook: 2000, 2002 (XP), 2003, 2007
- Internet Explorer: Version 6 or later

### To install the software:

1. Double-click spmde.exe file to start the setup process. The Setup - Stellar Phoenix Mailbox Exchange Desktop dialog box opens. Click **Next**.
2. In the License Agreement screen, select I accept the agreement option. The Next button will be enabled. Click **Next**.
3. In the Select Additional Tasks screen, check the required check boxes. Click **Next**.
4. In the Select Destination Location screen, provide the path by using Browse button where the setup files will be stored. Click **Next**.
5. In the Start Menu Folder screen, provide the path by using Browse button where the program's shortcuts will be stored. Click **Next**.
6. In the Ready to Install screen, review the settings. Click **Back** to change settings. After confirming the settings, click **Install**. The Installing screen shows the installation process.
7. After completing the process, the Completing the Stellar Phoenix Mailbox Exchange Desktop Setup Wizard screen opens. Click **Finish**.

### Starting the Software

#### To start the application, do one of the following:

- Click **Start | All Programs | Stellar Phoenix Mailbox Exchange Desktop**, and then click **Stellar Phoenix Mailbox Exchange Desktop**.
- Double-click the shortcut icon of **Stellar Phoenix Mailbox Exchange Desktop** from the desktop.
- Click quick launch icon on the taskbar.



You can clear the **Launch Stellar Phoenix Mailbox Exchange Desktop** check box to stop the automatic launch of the software.




Stellar Phoenix Mailbox Exchange Desktop

---

## How to Order

The software can be purchased by making payments online by using a credit card. Please visit <http://www.stellarinfo.com/exchange-ost-recovery-prices.htm?Order> for more information and to place an order.

Alternatively, if the demo version is installed then on the Help menu, select **Order Stellar Phoenix Mailbox Exchange Desktop**. This will open the home page of Stellar Phoenix Mailbox Exchange Desktop from where you can

purchase the software. You can also click **Order Stellar Phoenix Mailbox Exchange Desktop**  on the toolbar. The Order Stellar Phoenix Mailbox Exchange Desktop opens, click the Buy Stellar Phoenix Mailbox Exchange Desktop link to visit the home page from where you can purchase the software.



## How to Register



If the software is downloaded from <http://www.stellarinfo.com/exchange-ost-recovery-prices.htm?Order> (i.e., ESD version), for the full functionality, the product must be registered using Serial Number (received through email after purchasing the product).

If the software is installed using the product installation CD (i.e., BOX version), hardware lock



is mandatory for the functioning of the software that is available with the software kit.

After purchasing the software, you will receive the serial number, which is required to register the software. The serial number will be verified during the registration process and if the serial number is valid then the software will be registered.

The software can be registered in different ways. These are the methods by using which you can register the software:

- [Over internet](#)

You should have the serial number, which is received after purchase of the software. On entering the serial number it is verified by license server and on verification the software will be registered.

- [Manual Activation](#)

You will need to generate a PHX\_REG.txt file and mail the .txt file to [support@stellarinfo.com](mailto:support@stellarinfo.com). After verifying the serial number and purchase details of the software, the site key will be delivered to you at your email address. This site key is used to register the software manually.



## Registration Over Internet

### To register the software over Internet:

- On the Activation menu, click **Activate Stellar Phoenix Mailbox Exchange Desktop Online**. The Warning dialog box opens, click **OK**.
- In the Welcome to Stellar Phoenix - Electronic Software Registration wizard, click **Next**.
- Type the Serial number (received through email after purchasing the product) in the Serial number text box. Click **Next**.



- The software would automatically communicate with license server and register the software. Click **Finish** to complete the registration process.



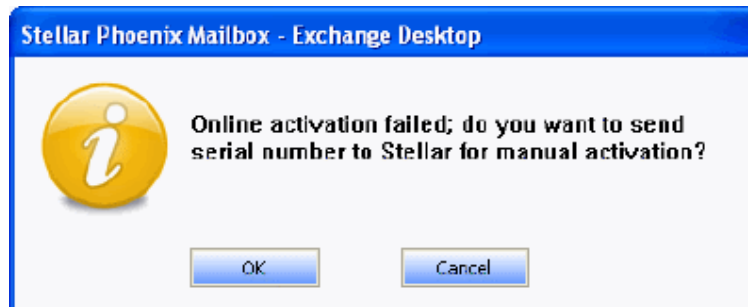
You can generate the PHX\_REG.txt file manually by starting the online activation. View [manual activation](#) topic to perform the process of generating PHX\_REG.txt file.



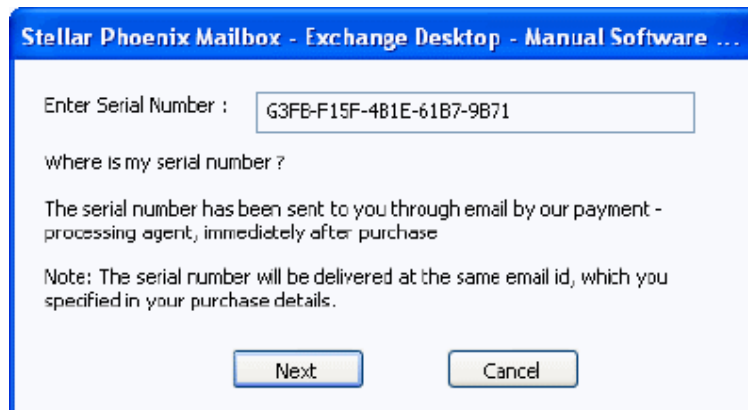
## Manual Activation

### To register the software by using manual activation process:

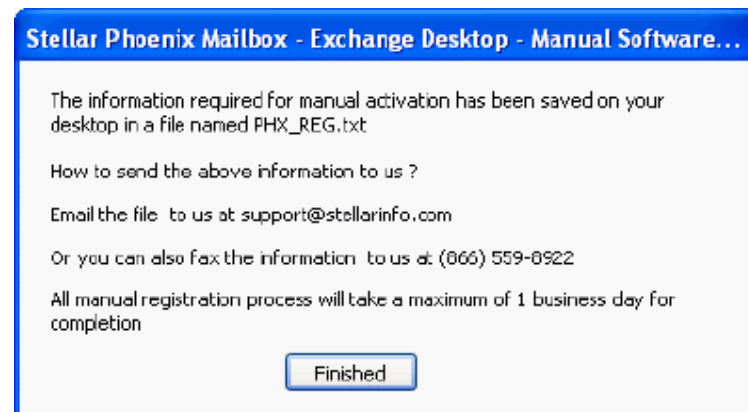
- On the Activation menu, click Activate Stellar Phoenix Mailbox Exchange Desktop Online. The Warning dialog box opens, click OK.
- In the Welcome to Stellar Phoenix - Electronic Software Registration wizard, click Cancel.
- The Stellar Phoenix Mailbox Exchange Desktop dialog box opens, click OK.



- In the Stellar Phoenix Mailbox Exchange Desktop -Manual Software ... dialog box, enter the serial number, which is received after the successful purchase of the software. Click **Next**.

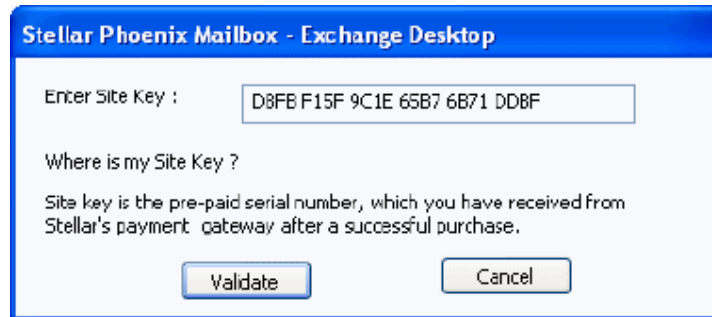


- A file named PHX\_REG.txt will be created at your desktop. Email the .txt file to [support@stellarinfo.com](mailto:support@stellarinfo.com) email address. Click **Finished**.



- In reply, you will receive the site key after checking the purchase details. This site key is required to activate the software manually.

- When you receive the site key, open Stellar Phoenix Mailbox Exchange Desktop, on the Activation menu, click **Manual Registration**. In the Stellar Phoenix Mailbox Exchange Desktop dialog box, enter the site key, which is received after sending the PHX\_REG.txt file. Click **Validate**.



Stellar Phoenix Mailbox - Exchange Desktop

Enter Site Key :

Where is my Site Key ?

Site key is the pre-paid serial number, which you have received from Stellar's payment gateway after a successful purchase.



The site key is delivered to your email address, which is used to sent the serial number.



Stellar Phoenix Mailbox Exchange Desktop

---

## Copyright

Stellar Phoenix Mailbox Exchange Desktop software, accompanied user manual and documentation are copyright of Stellar Information Systems Ltd., with all rights reserved. Under the copyright laws, this user manual cannot be reproduced in any form without the prior written permission of Stellar Information Systems Ltd. No Patent Liability is assumed, however, with respect to the use of the information contained herein.

**Copyright © 1995-2009 by Stellar Information Systems Ltd. INDIA**



## Disclaimer

The Information contained in this manual, including but not limited to any product specifications, is subject to change without notice.

**STELLAR INFORMATION SYSTEMS LTD PROVIDES NO WARRANTY WITH REGARD TO THIS MANUAL OR ANY OTHER INFORMATION CONTAINED HEREIN AND HEREBY EXPRESSLY DISCLAIMS ANY IMPLIED WARRANTIES OF MERCHANTABILITY OR FITNESS FOR ANY PARTICULAR PURPOSE WITH REGARD TO ANY OF THE FOREGOING STELLAR INFORMATION SYSTEMS LTD ASSUMES NO LIABILITY FOR ANY DAMAGES INCURRED DIRECTLY OR INDIRECTLY FROM ANY TECHNICAL OR TYPOGRAPHICAL ERRORS OR OMISSIONS CONTAINED HEREIN OR FOR DISCREPANCIES BETWEEN THE PRODUCT AND THE MANUAL. IN NO EVENT SHALL STELLAR INFORMATION SYSTEMS LTD, BE LIABLE FOR ANY INCIDENTAL, CONSEQUENTIAL SPECIAL, OR EXEMPLARY DAMAGES, WHETHER BASED ON TORT, CONTRACT OR OTHERWISE, ARISING OUT OF OR IN CONNECTION WITH THIS MANUAL OR ANY OTHER INFORMATION CONTAINED HEREIN OR THE USE THEREOF.**



## License Agreement

Stellar Phoenix Mailbox Exchange Desktop  
Copyright © 1995-2009 by Stellar Information Systems Ltd. INDIA  
[www.stellarinfo.com](http://www.stellarinfo.com)

All rights reserved.

All product names mentioned herein are the trademarks of their respective owners.

This license applies to the standard-licensed version of Stellar Phoenix Mailbox Exchange Desktop.

### Your Agreement to this License

You should carefully read the following terms and conditions before using, installing or distributing this software, unless you have a different license agreement signed by Stellar Information Systems Ltd.

If you do not agree to all of the terms and conditions of this License then do not copy, install, distribute or use any copy of Stellar Phoenix Mailbox Exchange Desktop with which this License is included, you may return the complete package unused without requesting an activation key within 30 days after purchase for a full refund of your payment.

The terms and conditions of this License describe the permitted use and users of each Licensed Copy of Stellar Phoenix Mailbox Exchange Desktop. For purposes of this License, if you have a valid single-user license, you have the right to use a single Licensed Copy of Stellar Phoenix Mailbox Exchange Desktop. If you or your organization has a valid multi-user license, then you or your organization has the right to use up to a number of Licensed Copies of Stellar Phoenix Mailbox Exchange Desktop equal to the number of copies indicated in the documents issued by Stellar when granting the license.

### Scope of License

Each Licensed Copy of Stellar Phoenix Mailbox Exchange Desktop may either be used by a single person or used non-simultaneously by multiple people who use the software personally installed on a single workstation. This is not a concurrent use license.

All rights of any kind in Stellar Phoenix Mailbox Exchange Desktop, which are not expressly granted in this license, are entirely and exclusively reserved to and by Stellar Information Systems Ltd. You may not rent, lease, modify, translate, reverse engineer, decompile, disassemble or create derivative works based on Stellar Phoenix Mailbox Exchange Desktop nor permit anyone else to do so. You may not make access to Stellar Phoenix Mailbox Exchange Desktop available to others in connection with a service bureau, application service provider or similar business nor permit anyone else to do so.

### Warranty Disclaimers and Liability Limitations.

Stellar Phoenix Mailbox Exchange Desktop and all accompanying software, files, data and materials are distributed and provided AS IS and with no warranties of any kind, whether expressed or implied. In particular, there is no warranty for the quality of data recovered. You acknowledge that good data processing procedure dictates that any program including Stellar Phoenix Mailbox Exchange Desktop must be thoroughly tested with non-critical data before there is any reliance on it and you hereby assume the entire risk of all use of the copies of Stellar Phoenix Mailbox Exchange Desktop covered by this License. This disclaimer of warranty constitutes an essential part of this License.

In addition, in no event does Stellar authorize you or anyone else to use Stellar Phoenix Mailbox Exchange Desktop in applications or systems where its failure to perform can reasonably be expected to result in a significant physical injury or in loss of life. Any such use is entirely at your own risk and you agree to hold Stellar harmless from any and all claims or losses relating to such unauthorized use.

### General

This License is the complete statement of the agreement between the parties on the subject matter and merges and supersedes all other or prior understandings, purchase orders, agreements and arrangements. This License shall be governed by the laws of the State of Delhi, India. Exclusive jurisdiction and venue for all matters relating to this License shall be in courts and for a located in the State of Delhi, India and you consent to such jurisdiction and venue. There are no third party beneficiaries of any promises, obligations or representations made by Stellar herein. Any

waiver by Stellar of any violation of this License by you shall not constitute nor contribute to a waiver by Stellar of any other or future violation of the same provision or any other provision of this License.  
**Copyright ©1995-2009 by Stellar Information Systems Ltd. All rights reserved.**



Stellar Phoenix Mailbox Exchange Desktop

---

## Trademarks

Stellar Phoenix Mailbox Exchange Desktop® is a registered trademark of Stellar Information Systems Ltd. Windows 2000 Server®, Windows XP®, Windows 2003®, Windows Vista®, MS Office and MS Outlook are registered trademarks of Microsoft® Corporation Inc.

All Trademarks Acknowledged.

All other brands and product names are trademarks or registered trademarks of their respective companies.



---

## Technical Support

Our Technical Support professionals will give solutions for all your queries related to Stellar Products. You can either Call Us or Go Online to our support section <http://stellarinfo.com/esupport/users/kb.php>

<b>Support Helpline</b>	
<b>Monday to Friday [ 24 Hrs. a day ]</b>	
USA (Toll free - Pre Sales Queries)	1-866-554-2512
USA (Post Sales Queries)	1-315-220-6245
UK (Europe)	+44-207-993-2293
Germany	+49-180-110-105-0051
Worldwide	+91-921-395-5509
Skype Id	stellarsupport
Email Orders	<a href="mailto:orders@stellarinfo.com">orders@stellarinfo.com</a>

### Online Help

- [Chat Live](#) with an Online technician
- Search in our extensive [Knowledge Base](#)
- [Submit Ticket](#) (If our Knowledge Base does not answer your question)
- Login and view [Ticket Status](#) (If you already have a valid Ticket with you)
- [Download Documents](#) on Product Usage ( For Registered members only, i.e, user with login ID. If you are an unregistered user, please visit <http://stellarinfo.com/esupport/users/login.php> to create login ID)



## About Stellar

Stellar Information Systems Ltd. is a trusted name in the field of Data Recovery and Data Protection Software for more than a decade.

We provide the widest range of Data Recovery Products. Our range includes Data Recovery Software for almost all Operating Systems and File Systems.

### Product line:

#### Data Recovery

A widest range of data recovery software that helps you recover your valued data lost after accidental format, virus problems, software malfunction, file/directory deletion, or even sabotage!. [More Info >>](#)

#### File Recovery

The most comprehensive range of file undelete and unerase software for Windows and MS office repair tools. [More Info >>](#)

#### Email Recovery

A wide range of mail recovery, mail repair and mail conversion applications for MS Outlook, MS Outlook Express and MS Exchange useful in instances of data loss due to damages and corruption of Email. [More Info >>](#)

#### Data Protection

A wide range of Prevent Data Loss, Data backup and Hard Drive Monitoring Applications to ensure complete data protection against hard drive crash. [More Info >>](#)

#### Data Sanitization

Data cleanup and file eraser utility can delete selected folders, groups of files, entire logical drives, System Traces & Internet traces. Once the data have been removed using Stellar Wipe - Data File eraser utility, it is beyond recovery limits of any Data Recovery Software or utility. [More Info >>](#)

For more information about us, please visit [www.stellarinfo.com](http://www.stellarinfo.com)

---